

FAST & FLUID MANAGEMENT

EuroAT

ENGLISH

Table of Contents

AT750 manual (UK)	5
EU Declaration of conformity	5
Introduction & Warranty	6
Explanation of picture	7
Safety Instructions	8
Installation	9
Operation	11
Maintenance	15
Troubleshooting	17
Technical specifications	19
Contributing to the Protection of the Environment	20

AT750 manual (UK)

EU Declaration of conformity

Fast & Fluid Management, the Netherlands
A Unit of IDEX Corporation
Hub van Doorneweg 31
2171 KZ Sassenheim, the Netherlands

declare that:

Produkt: Automatic dispensers
Model: Accutinter
Types: AT7500

are in compliance with the following directives:
Machinery Directive 98/37/EC
Low Voltage Directive 2006/95/EEC
Electromagnetic Compatibility Directive 89/336/EEC

according to the following harmonized standards:
EN 292-1, EN 292-2, EN 418 & EN 1050
EN 60204-1
EN 61000-6-2, EN 61000-6-3, EN 61000-3-2 & EN 61000-3-3

Sassenheim, 01-06-2005



ir. F. Puijman
Vice President Manufacturing
Fast & Fluid Management, the Netherlands
A Unit of IDEX Corporation

Introduction & Warranty

Introduction

By selecting a Fast & Fluid Management Color Dispenser you have opted for a product which is the result of intensive research. Top-quality components, craftsmanship and a modern ergonomic design all serve to guarantee a long service life and a high degree of user friendliness. The machine complies with Council Directives 89/392/EEC on machines, 89/336/EEC on electromagnetic compatibility, and 73/32/EEC on electrical equipment intended for use within given voltage limits, as enacted by the Council of Ministers of the European Community. The machine is furnished with a CE mark.

Warranty conditions

In these warranty conditions, 'F&FM' is understood to mean Fast & Fluid Management. The warranty conditions incorporated into F&FM's general conditions of sale are summarized as follows (for free general conditions you can contact F&FM):

F&FM guarantees the proper operation of any goods which it supplies, for a period of one year, except where a breakdown is the result of normal wear and tear. The cost of any inspection activities carried out by F&FM, with the aim of establishing whether or not a breakdown is covered by the warranty will be reimbursed by the other party if it transpires that the breakdown is not covered by the warranty. If it transpires that a breakdown is covered by the warranty then F&FM will supply identical or equivalent goods under the conditions referred to in point 6 of the general conditions of sale. The warranty obligation described in this article only applies if the goods supplied by F&FM have been used in accordance with the manual. Time spent on warranty-related activities, including travel time, travel costs and accommodation costs, are charged at current rates.

In contrast to the above, F&FM will not be held to any warranty obligation if:

1. Repairs have been carried out, or attempted, by the other party or a third party, unless F&FM had previously declined to repair the goods for a fair price;
2. F&FM demonstrates that the defect did not emerge during testing;
3. The other party fails to inform F&FM of the defect immediately, if possible either by letter and/or by fax, providing full, accurate details and/or has failed to comply fully with F&FM's instructions;
4. The other party has failed to use or treat the goods properly or in accordance with F&FM's instructions;
5. The damage has been caused by incidents, beyond F&FM's supervision, which have occurred either during transport or installation.

In the following text, the expression "Software" will be understood to mean the standard computer software supplied by F&FM to the other party, recorded on a computer-readable storage medium, plus the accompanying documentation (Software Manual) and including any improved and/or new versions supplied. The expression "processing unit" (PU) is understood to mean the machine for which and with which the Software is supplied, and which is the sole machine on which the Software may be used.

The other party is authorized to copy the Software either in its entirety, or in part, (up to a maximum of 2 copies) for purposes of internal security. These copies will be furnished with the same marks, designations relating to copyright and other registration numbers as the original version of the Software.

The other party will neither amend, translate, decompile nor adapt the Software, nor convert it into source code, without express written permission from F&FM. If the other party so requests, F&FM will provide that party with the information required to render the Software interoperable with other software.

In the event that the PU experiences a breakdown, the other party may use the software on another processing unit until the PU is again operational. The other party will inform F&FM of this within 5 days.

If it is a requirement that the Software be definitively transferred from the PU to another processing unit then the other party shall request permission from F&FM, which will not withhold such permission on unreasonable grounds.

Explanation of picture



Dispenser

1. Dispenser module
2. Canister module
3. Service panels
4. Electrical parts
5. Nozzle closure
6. Keyboard support
7. Nozzle guard

Safety Instructions

General safety instructions



Attention! Before installing the equipment and setting it in operation, please read the instructions for use carefully. This is safer for yourself and prevents unnecessary damage to the machine.

The manufacturer accepts no liability if the instructions below are not followed:

1. If a machine has been damaged (during transport, for example), do not attempt to set it in operation. When in doubt, first contact either your supplier or the F&FM service department.
2. The equipment should be positioned and connected up in strict accordance with the installation instructions.
3. All local safety regulations and ordinances should be observed.
4. The machine may be connected only to a 230V/16A/50Hz or 100-110V/25A/50-60HZ earthed wall socket installed in accordance with the regulations.
5. Users should see to it that the machine is kept in good condition. Defective components should be replaced.
6. In order to prevent physical injury, the doors should be closed and the paneling fitted during normal use.
7. All service activities (other than routine maintenance and adjustments) may only be carried out by qualified technicians. See to it that the mains lead is always kept unplugged while repairs are being carried out.
8. Because of the design of the valve, a nozzle drill may never be used. Cleaning is done by running the cleaning program.

Specific warnings in this manual



Attention! MOVING PARTS CAN CAUSE INJURY. Always turn off power before accessing moving parts.

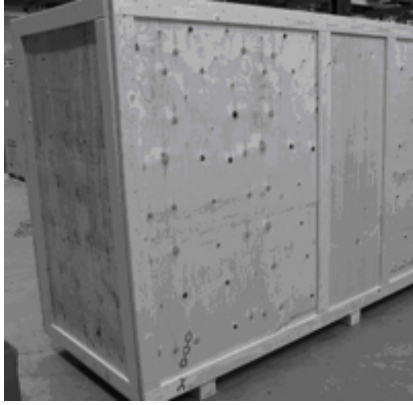


Each line in the machine (pumps and tubing) is tested with water. If your application is not compatible with water please rinse intensely with an appropriate fluid.

Installation

A - Installing the dispenser

Step 1 - Unpack the machine




Place the crate near the place of installation.

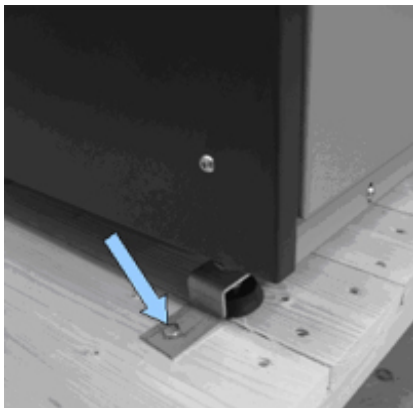


Remove the sides of the crate.

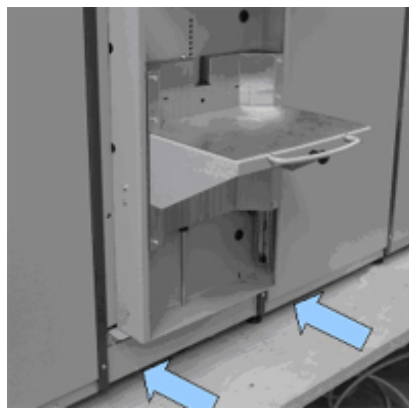


Turn one off the sides up side down so you can ride the machine down from the crate.
Remove the plastic foil around the machine.

 Be careful not to damage the body and surfaces of your EuroAT with any tools while unpacking it.



Remove packing clamps and bolts.



Carefully lift the machine from the skid with a fork lifter and roll the machine to its final operational position.



Lower the adjustable feet far enough to lift the machine off its wheels.

B - Installing the computer and software

Step 1 - Place and connect computer to dispenser



>



Place computer and monitor on top of dispenser module and the keyboard on the keyboard on support

Connect dispenser connector to COM1 (default) and mouse, keyboard and other appliances to design-nated computer ports.

Step 2 - Install dispenser software on computer



>



Install all necessary software provided by software supplier. Check software manual for details.

Use software to test basic functions of dispenser before filling.
Check software manual for testing procedure.

Operation

A - First time operation

Step 1 - Switching ON the dispenser & computer



>

The machine is automatically switched on when the power connector at the back of the dispenser is plugged into a 220V or 100V-110V wall socket.

* We recommend to keep the machine on at all times.

Step 2 - Setting the stirring time

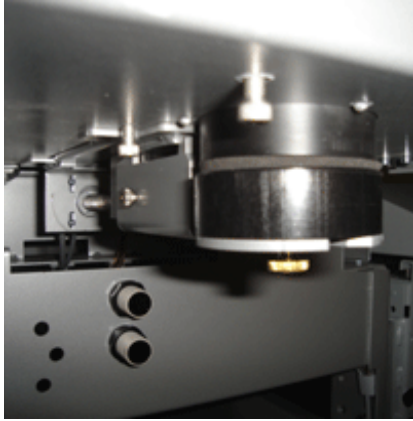


>

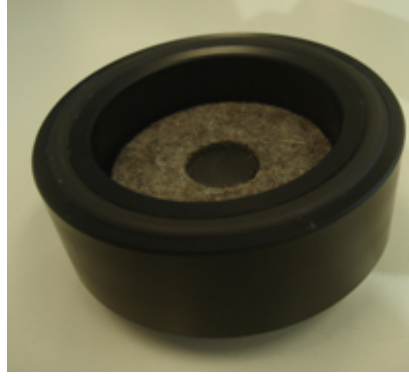
The stirring time and interval can be altered from its default settings*. This can be done through the dispenser software, check your software manual for instructions. Please ask your paint supplier for optimal agitation settings for your specific colorant products.

* Default value is 180 seconds of agitation every 3 hours.

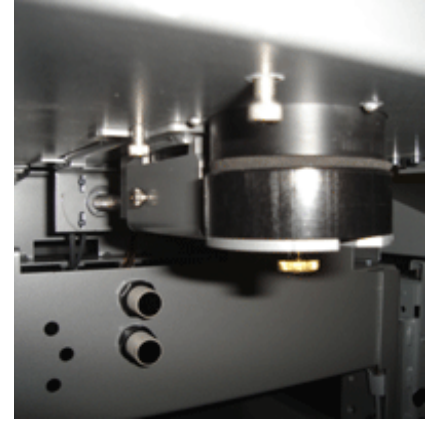
Step 3 - Fill the nozzle closure.



>



>



Use the appropriate command from the dispenser software to open the nozzle closure. Remove the cup holder.

Fill the cup with water or cleaning fluid until the pad is soaked.

Replace the cup holder in its original position.



Use only cleaning fluids recommended by your paint supplier. Wrong materials can result in nozzle blockage and reduced accuracy.



Each line in the machine (pumps and tubing) is tested with water. If your application is not compatible with water please rinse intensely with an appropriate fluid.

Step 4 - Fill the canisters with colourant



>



Check your software manual for filling sequence.

Run software purge program until the air is removed from system.

B - Dispensing

Step 1 - Bring can to correct position



>



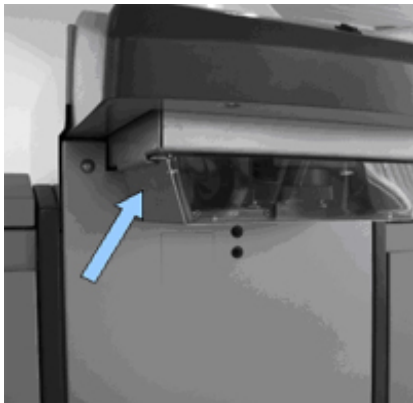
>



Place the can at the right place of the can table. Use the 3 LED-spots to check if the can is in the right position.

If the electrical can table option is installed: move the can table upward by pres-sing the can table switch on the keyboard support.

The upward movement will stop automatically. This is the optimal height for dispensing.



>



>



For safety reasons the can table will not move upwards without the nozzle guard in right position!

If the manual can table option is installed: hold the can table and unlock the index pin.

Lift the can table until the can is in reach of the can sensor. The can should be just below the nozzle guard. Release the index pin. Gently release the can table.

Step 2 - Dispense colorant into base material



Ensure can opening is under the dispenser nozzle and at its optimal height .

>



Choose desired formula as shown in software manual. The dispenser will sub-sequently dispense the colorants.

>



Lower can by pressing can table button on keyboard support and remove can.

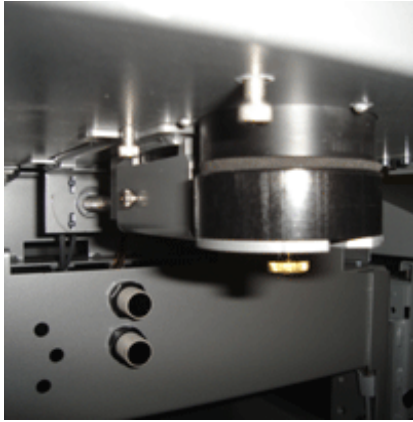


Dispensing is mainly a software issue. Please read your software manual thoroughly for all possible options.

Maintenance

A - Daily maintenance

Clean the nozzle closure, refill canisters and run morning program



Replace the pad. Refill the cup with water or cleaning fluid until the pad is soaked.



Fill canisters if level is low and update levels in software. Stir colorant beforehand.



Start software morning program to purge valves and clean nozzles. Check your software manual for details.

 Use only cleaning fluids recommended by your paint supplier. Wrong materials can result in nozzle blockage and reduced accuracy.

B - Weekly maintenance

Remove spilt paint & colorant and refill canisters




Clean can table and outside parts with diluted detergent.



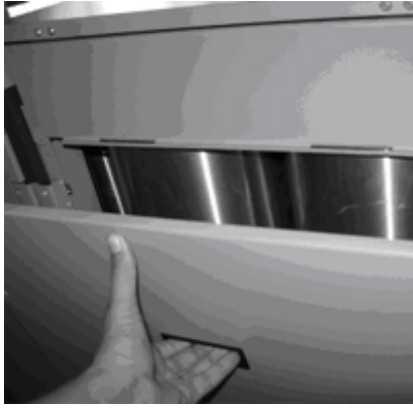
Clean outside parts with diluted detergent.



Check canister content and refill if necessary.

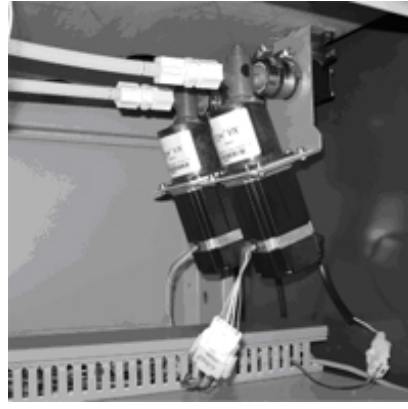
 Always close canister and machine lid after refilling. Be aware the machine will not agitate if the top lid is not closed!

C - Monthly maintenance



Remove back panel.

>



Check pump for possible malfunctions (e.g. leakage or blockage).



Attention! MOVING PARTS CAN CAUSE INJURY. Always turn off power before accessing moving parts.

Troubleshooting

A - Introduction

Before calling your machine supplier or Service Department, please check whether you can solve the problem yourself. If you cannot, then call the Service Department for advice. Have the model number and serial number at hand (these can be found on the silver CE sticker at the service panel at the back of the machine). Use the Problem Solving chart below to judge whether you can solve a problem yourself or not. The tool symbol (🔧) means you cannot solve the problem yourself and the Service Department must be called. On no occasion remove side panels yourself, this may only be done by trained service personnel. This chart does not include any of the malfunctions which are reported in an error message by the software. In the event of a malfunction, these messages and possible solutions are displayed on the monitor.



Attention! MOVING PARTS CAN CAUSE INJURY. Always turn off power before accessing moving parts.

B - Problem solving

<i>Symptom</i>	<i>Cause</i>	<i>Action</i>
Nozzle leaks through the outlet opening	Air bubble in pump	Prime the pump
	Pump is defective	Replace pump 🔧
Canister connection leaks around the suction point	Worn O-ring(s)	Replace O-ring(s) 🔧
Air is being fed together with the paste	Air bubble in the pump	Prime the pump
	Canister is empty	Refill canister
(New) software is not working	Program not correctly booted	Reboot computer & software
	Software incorrectly installed	Reinstall software
No power from power unit	Not connected to power grid	Check power cables
	Fuse blown	Remove plug from socket, replace fuse
Colours are difficult to reproduce	Mechanisms are dirty	Clean and oil
	Quality fluctuations in paste supplied	Contact paste supplier
	One or more pastes have thickened	Replace paste(s)
Poor monitor picture, or no picture	Monitor is switched off	Switch monitor on
	Loose cable(s)	Check cables
	Picture set too dark	Adjust picture correctly
	Monitor malfunctioning	🔧
Keyboard is not working	Loose cable(s)	Check cables
	Windows Regional setting is incorrect	Check Windows software manual
	Defective cable(s)	🔧
	Keyboard is defective	🔧
Stirrer is not rotating	Top lid not closed properly	Close top lid
	Timer setting incorrect	Use the software to set the timer correctly
	Loose cable	Check cable
	Defective cable	🔧

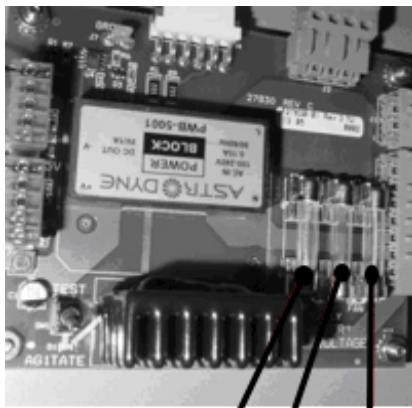


C - Service Department

If necessary, you can get in touch with your supplier or the local service department, or contact the manufacturer directly. If you contact the manufacturer, make sure that you have the model number and serial number to hand. They can be found on the name plate on the back of the machine.

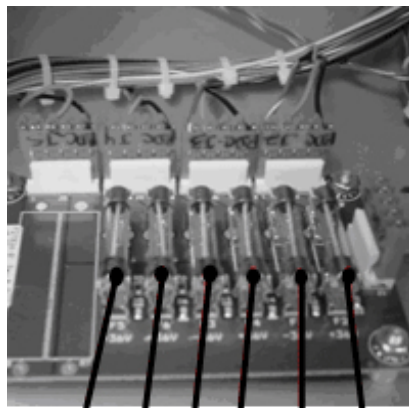
Fast & Fluid Management
P.O. Box 220
2170 AE Sassenheim, the Netherlands
Hub van Doorneweg 31
2171 KZ Sassenheim, the Netherlands
Tel: + 31 (0)252 240 800
Fax: + 31 (0)252 240 882 (service)
+ 31 (0)252 240 880 (general)

D - Replace fuses



6Amp 1Amp 1Amp

>



4Amp All

Technical specifications

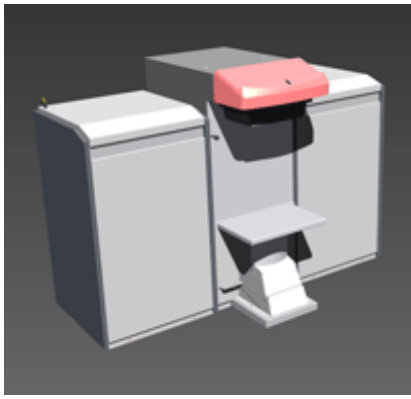
Contributing to the Protection of the Environment

Packaging Material

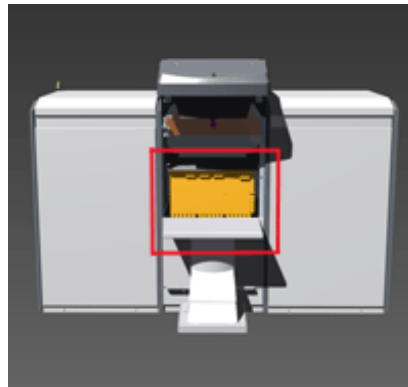
The packaging protects the machine against damage during transport. The packaging material was chosen based on its limited impact on the environment and its inherent possibilities for waste-disposal. The reuse of packaging material saves raw materials and produces less waste material. Generally speaking, your supplier will take the packaging off your hands.

Discarding the Machine

Discarded equipment usually still consists of valuable materials. For this reason, do not simply throw your machine out with the oversized refuse, but ask your supplier whether he will take the machine back. If he will not, then enquire at your local government offices or ask a trader of raw materials what options there are for recycling the material (e.g. scrap processing, electrical components and plastic (see below for additional information)).



All red-coloured components are made of ABS. These components can be recycled.



Inside the red square pictured above (on the front of the dispenser) are electrical components that can be recycled.

