

!! IMPORTANT MESSAGE !!
INSTALLING PRISMA DOS ON NETVISTA COMPUTERS

From September 3rd, 2001 Fluid Management will supply IBM NetVista computers. These PCs have only one COM port on the motherboard. An extra PCI expansion card is built into the NetVista computers allow a dispenser and labelprinter to be connected.

To use Prisma DOS in combination with the IBM NetVista computer + COM expansion card the following changes are needed:

1. The dispenser needs to be connected to COM1, the label printer to COM2
2. A driver for the Vscom COM port expansion card needs to be installed
3. The autoexec.bat and config.sys files need to be modified
4. The label printer software must be changed from COM1 to COM2
5. COM port settings for Prisma DOS must be changed

This instruction explains how to make the above modifications. Section 1 of this instruction explains change number 1. Section 2 explains how to makes changes 2,3 and 4 using the enclosed diskette. Section 3 explains what you have to do different during the installation of Prisma DOS. Finally section 4 explains how to make change number 5.

1 Connect the dispenser and Labelprinter

Leave the computer OFF!! Please connect the serial cable connected to the dispenser to COM1 and the label printer cable to COM 2 as indicated in the picture below:



2 Install and change system files

- Leave the computer OFF!!
- Insert the enclosed diskette in the computer disk drive
- Switch on the computer and wait
The computer will boot from the diskette and start the installation program.
- Please select the type of computer being used:

```

Install SLP and COM drivers for Harbil and Prisma Dos          Version 1.0 16-8-2001
for IBM computers supplied by Fluid Management

1. IBM Netvista + VScom PCI card
   COM1 on motherboard; COM2 and COM3 on VScom expansion card
   COM1 auf Hauptplatine; COM2 und COM3 auf VScom carte

2. IBM 300 series
   COM1 and COM2 on motherboard
   COM1 und COM2 auf Hauptplatine

3. Exit/Ende

Choice/Wahl:_
  
```

Select option: **1. IBM NetVista with Vscom PCI expansion card**

- Next select the type of software being used:

```

Please select the type of Fluid dispense software used:
Bitte wählen sie der gebrauchte Software:

1. Prisma DOS
2. Harbil

Choice/Wahl:_
  
```

Select option: **1. Prisma DOS**

- Next select the type of label printer being used:

```

Please select the type of label printer used and
the COM port it is connected to:
Bitte wählen Sie der Etikettendrucker und COM-port:

1. SLP 100 on/auf COM2
2. SLP 240 on/auf COM2
3. None/Keine

Choice/Wahl:_
  
```

Select option: 1 or 2 depending on the type of label printer to be connected to your computer.

Note: *On a NetVista computer the label printer MUST always be connected to COM2!!*

- The installer will now copy the required files onto the computer disk. When the installer is finished, the following message will appear:

```

Installation complete / Installiervorgang is beendet!!!

Please install the Prisma Dos software next.
Bitte installieren sie jetzt das Prisma DOS Prorammm.

!!!! IMPORTANT !!!!
Do NOT overwrite the following two system files
During the installation procedure !!!!
c:\autoexec.bat
c:\config.sys

!!!! WICHTIG !!!!
Überschreiben sie der folgende Systemdateien NICHT
während der installations vorgang.
c:\autoexec.bat
c:\config.sys

c:\ =>
  
```

Please proceed with the installation of the Prisma DOS program as explained below.

3 Install the Prisma DOS program

- Install the Prisma DOS program using the Prisma DOS program diskettes.
- During the program installation the following selection appears:

```

+-----+-----+
| INSTALLATION PROGRAM for PRISMA                               | by FLUID MANAGEMENT |
+-----+-----+

PRISMA will be installed in the following directory:

                C:\PRISMA

PRISMA, DOS-Version
Minimum memory required: 4 MB

Press any key to continue . . .

Overwrite CONFIG.SYS and AUTOEXEC.BAT (1=Yes, 2=No)?
Choice:
  
```

Selection option 2=NO !!!

Continue with the installation of the Prisma program diskette and the Prisma data diskette as you normally do.

When all Prisma installation steps are carried out, proceed with the final step described in the next section.

4 Change Prisma DOS settings

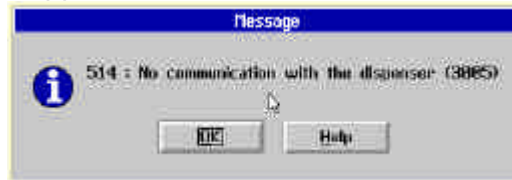
Two changes are needed in Prisma DOS:

1. Change dispenser serial port setting from 2 to 1
2. Change the label printer text file form SLP1 to SPL2

How to make these changes is explained in detail the in the following to sections.

4.1 Change serial port settings

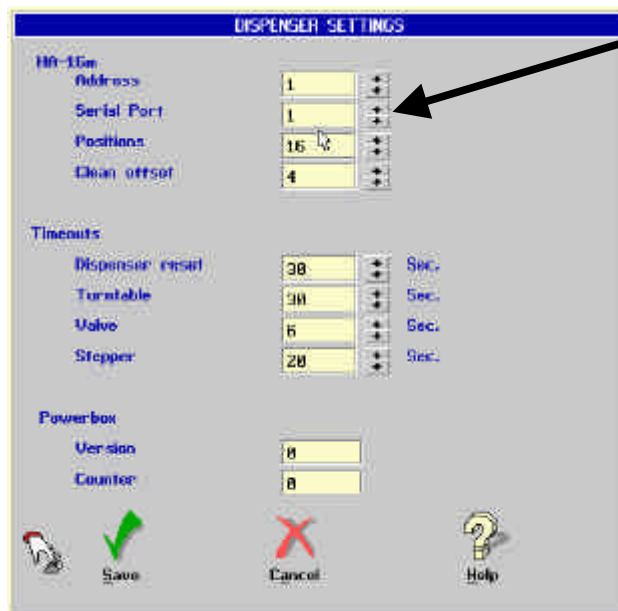
- Restart your computer by pressing CTRL-ALT-DEL
- Wait until the computer has started us and the Prisma program has started.
- The following message will appear:



Press **OK** to close this message.

- Click on the button **Maintenance** in the Prisma main Window
- Click on the button **Dispenser**
- Click on the button **Settings** to open the settings window.

The *settings* window is shown below:



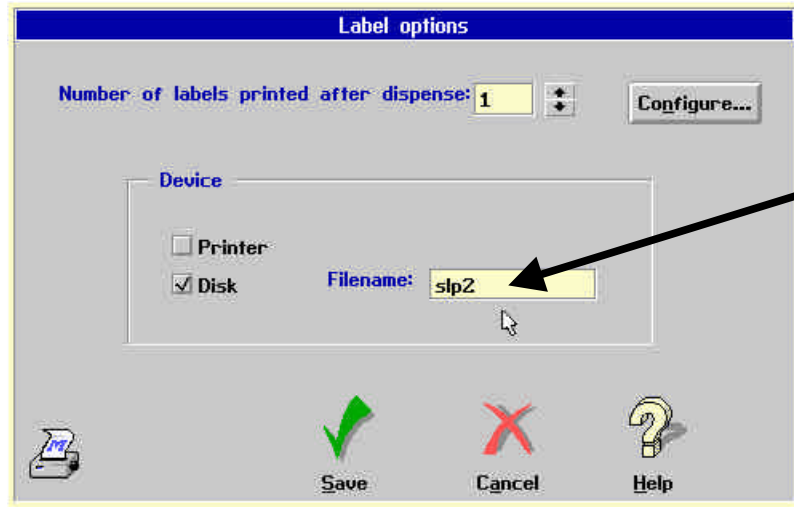
Set the value in the field **Serial Port** to 1 (old value was 2)

- Press the **Save** button to store the setting changes.
- Press the **Close** button to go back to the Maintenance screen
- Press the **Close** button to go back to the Prisma main screen

4.2 Changing label printer settings

- Click on the button **Setup** in the Prisma main Window
- Click on the button **Edit Label Options**

The *Label Options* windows is shown below:



Set the the **Device** to 'Disk' and set the **Filename** is 'slp2'.

- Press the **Save** button to store the setting changes.
- Press the **Close** button to go back to the Prisma main screen